



Welcome to the Business Owner Task Force

Selma Stockstill
SouthGate Constructors
Public Information Manager



**JOIN THE RED THUMB MOVEMENT
BY TAKING THE PLEDGE TO STOP
TEXTING AND DRIVING**

**STAY ALIVE.
JUST DRIVE.**



NTTA
NORTH TEXAS TRUCK AND TRAILER AUTHORITY
#RedThumbNTTA



**Upcoming work at
Industrial Blvd. /
FM 157**

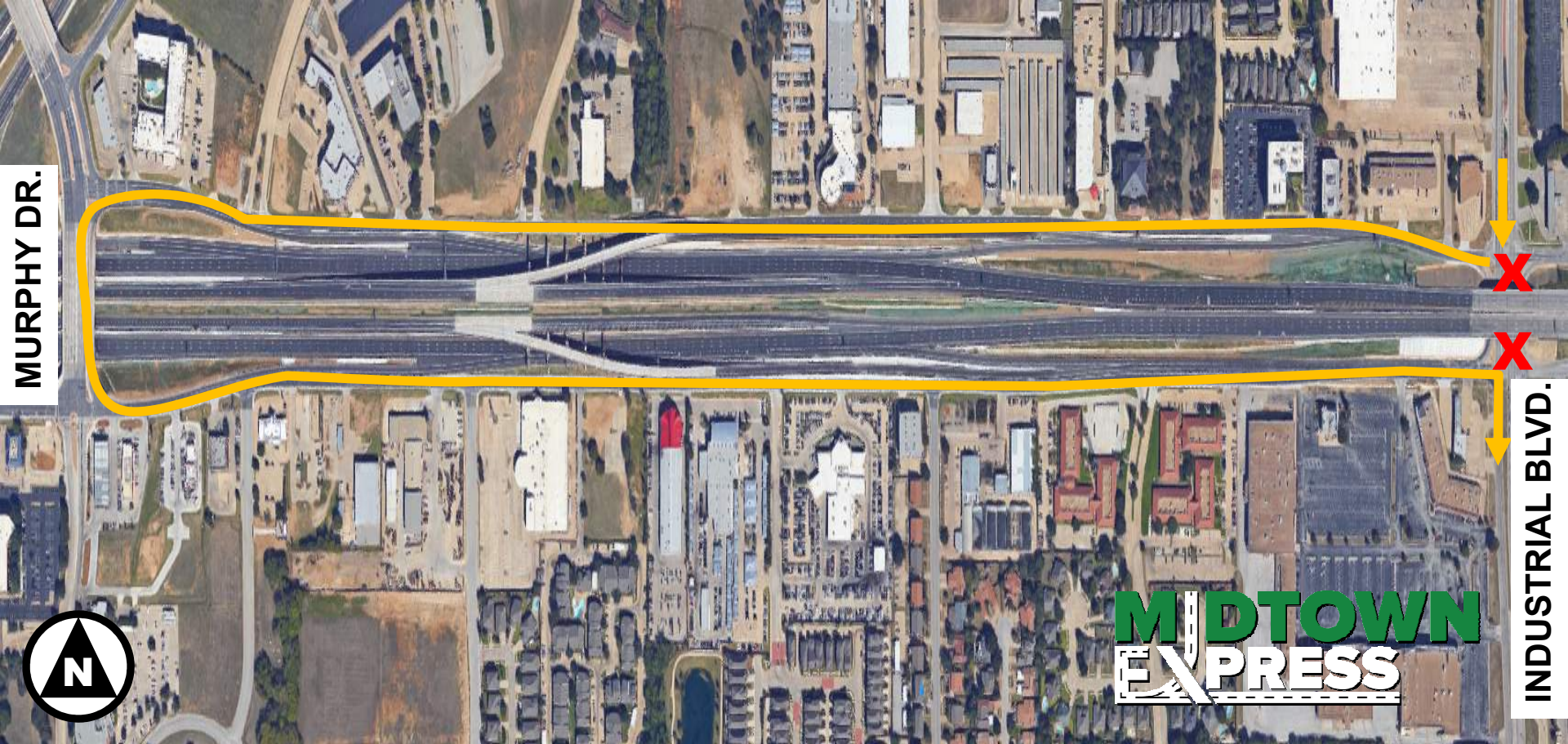
INDUSTRIAL BLVD.

ECTOR DR.



Full Weekend Closure Of North & Southbound Industrial Blvd. Under SH 183 – Northbound Detour

- **Dates & Times:** Continuously from 8PM on 4/1 to 6AM on 4/4
- **Detour:** Northbound Industrial Blvd. traffic will take the eastbound frontage road to Ector Dr., take the U-turn under SH 183 and turn left onto the westbound frontage road to Industrial Blvd.
- **Existing SH 183 capacity remains after removals**



Full Weekend Closure Of North & Southbound Industrial Blvd. Under SH 183 – Southbound Detour

- **Dates & Times:** Continuously from 8PM on 4/1 to 6AM on 4/4
- **Detour:** Southbound Industrial Blvd.Dr. traffic will take the westbound frontage road to Murphy Dr., take the U-turn over SH 183 and turn left onto the eastbound frontage road to Industrial Blvd.
- **Existing SH 183 capacity remains after removals**

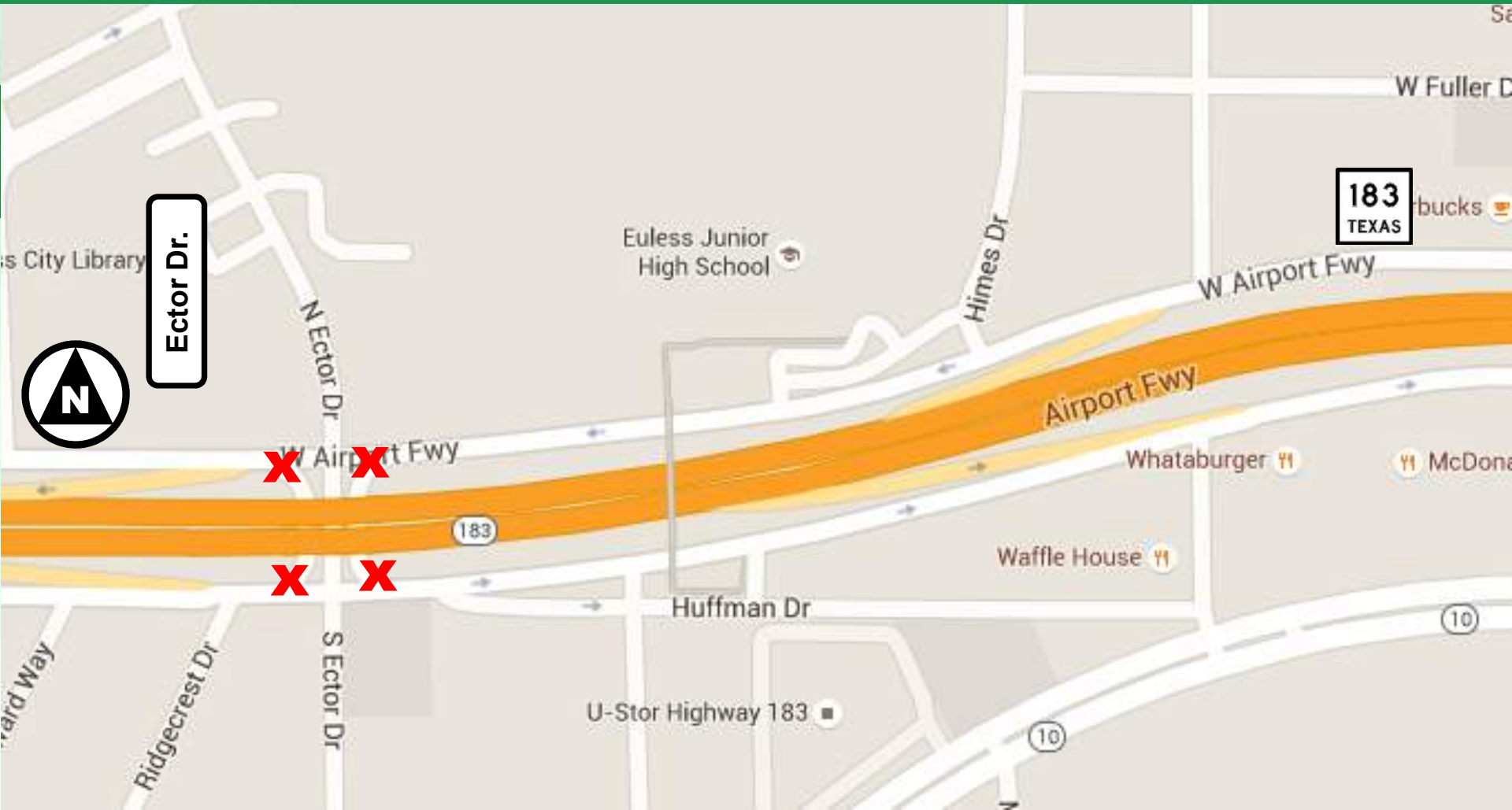


Upcoming Closures

Ector U-Turns Closed Temporarily

Dates and Times: Closed continuously for the next two weeks starting 3/23
Please note the east to westbound u-turn will not be closed during the weekend closure of Industrial Blvd.

Not to scale





Main Street Bridge Preliminary Detour Information

Mark Rahla
Maintenance of Traffic

LONG-TERM CLOSURE OF MAIN ST. BRIDGE

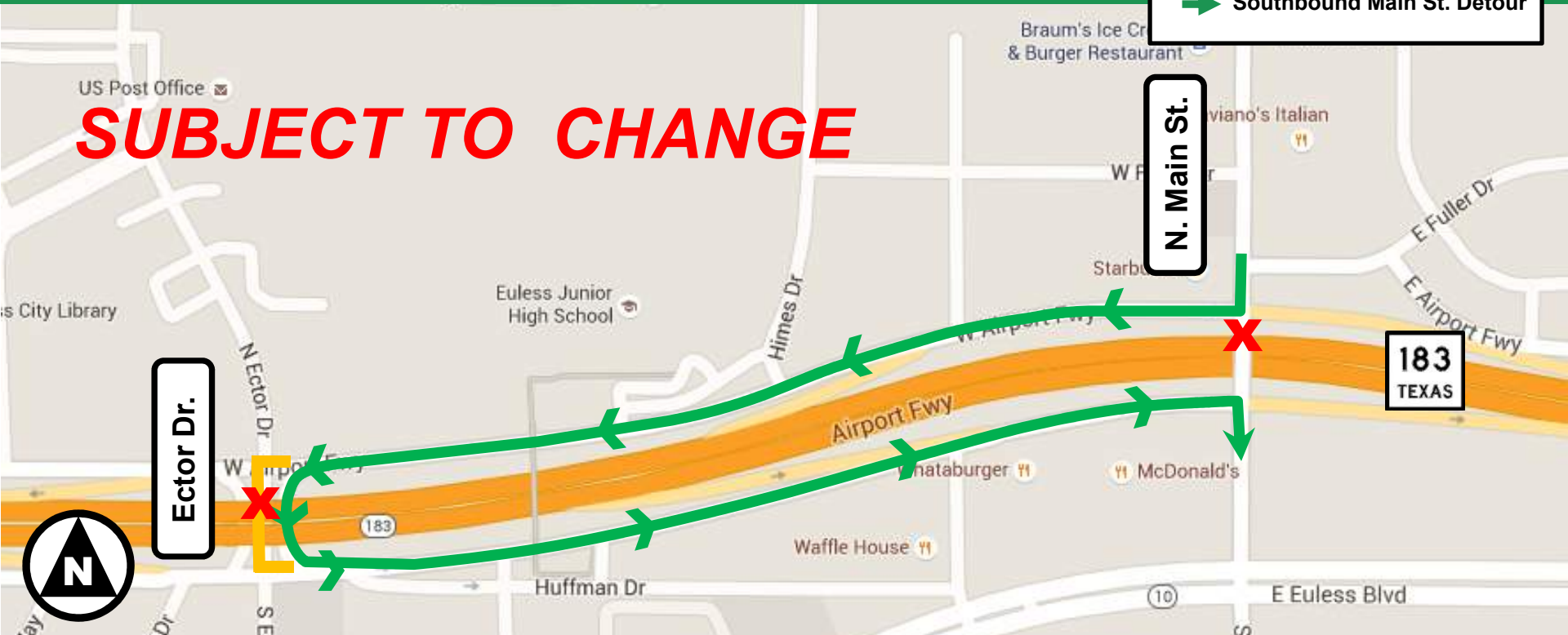
Detour to southbound Main St.

Not to scale

LEGEND

- X** Main St. Bridge Closed
- Southbound Main St. Detour

SUBJECT TO CHANGE



Getting from North Main St. to South Main St.

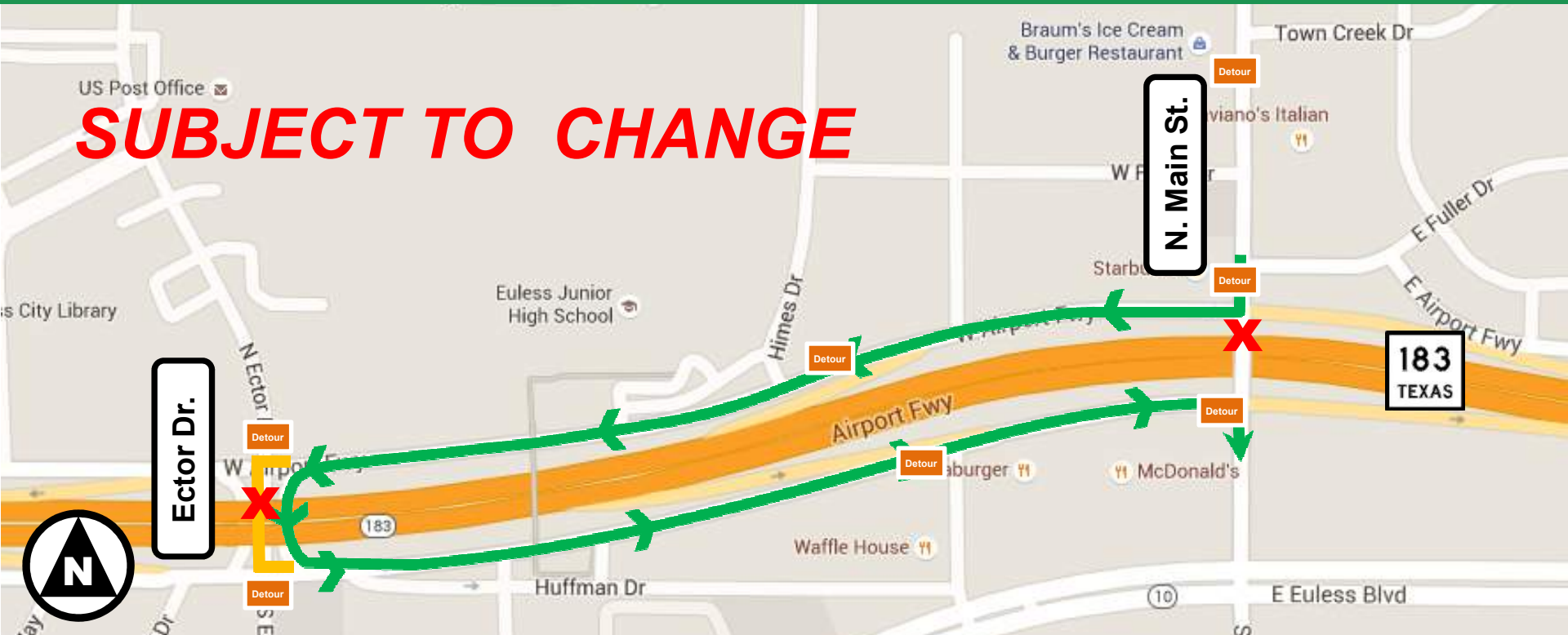
1. Drivers must turn right onto the westbound SH 183 frontage rd. and follow it Ector Dr.
2. At the Ector Dr. intersection, drivers will take the u-turn to eastbound SH 183 frontage road.
3. Drivers will turn right at Main St. to head south.

LONG-TERM CLOSURE OF MAIN ST. BRIDGE

Southbound Detour Signage Placement

Not to scale

SUBJECT TO CHANGE



X Main St. Bridge Closed

→ Northbound Main St. Detour

Detour Detour signage placement

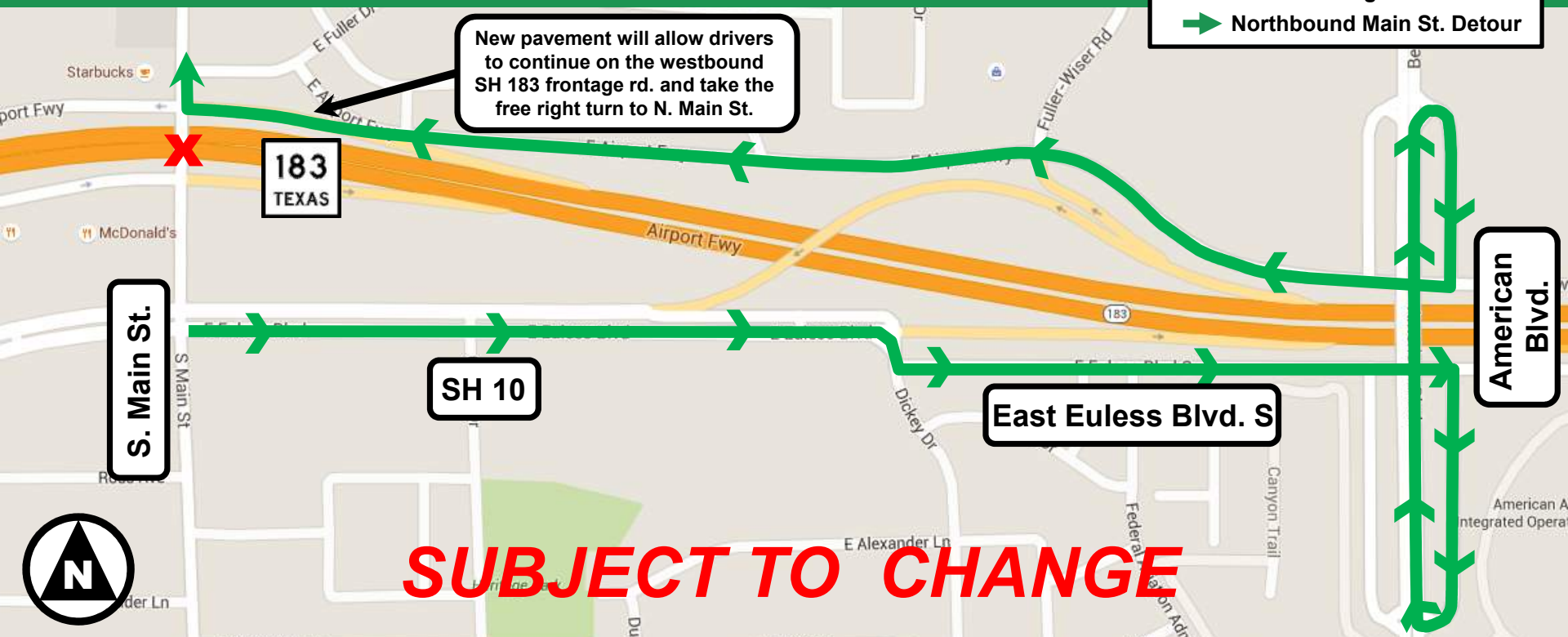
Detour Signage

1. The map shows a representation of the location of detour signage along the detour route. It does not represent actual wording on the signage.
2. Additional detour signs, not shown, will also be placed farther north on Main St.

LONG-TERM CLOSURE OF MAIN ST. BRIDGE

Detour to northbound Main St.

Not to scale



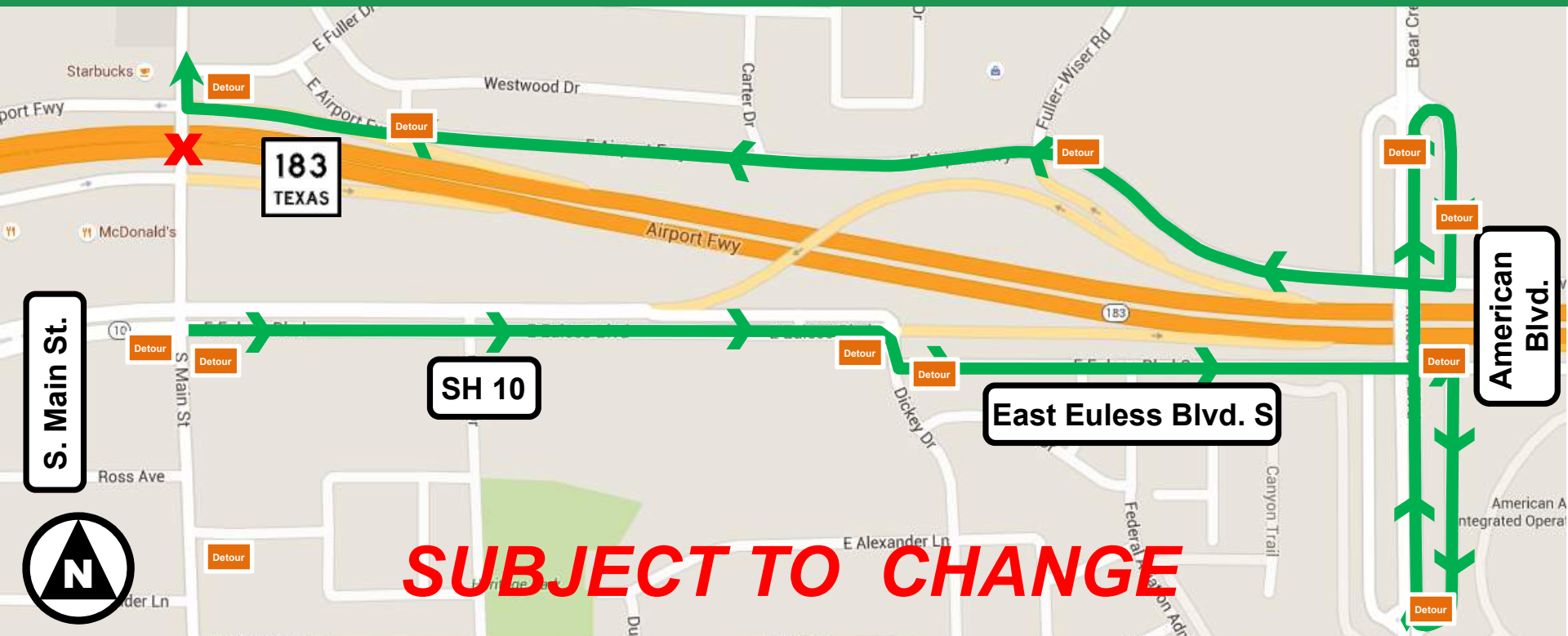
Getting from South Main St. to North Main St.

1. Drivers must turn right on Highway 10. If drivers continue north to the eastbound SH 183 frontage road, they will be forced to join eastbound SH 183.
2. Continue on Highway 10 and take the free right at Dickey Dr., then turn left onto East Eules Blvd. S.
3. Follow East Eules Blvd. S. and turn right onto the American Blvd. u-turns.
4. Follow detour signs on American Blvd. to the westbound SH 183 frontage rd. Continue on the westbound SH 183 frontage and take the free right turn to N. Main St.

LONG-TERM CLOSURE OF MAIN ST. BRIDGE

Northbound Detour Signage Placement

Not to scale



SUBJECT TO CHANGE

- X** Main St. Bridge Closed
- Northbound Main St. Detour
- Detour** Detour signage placement

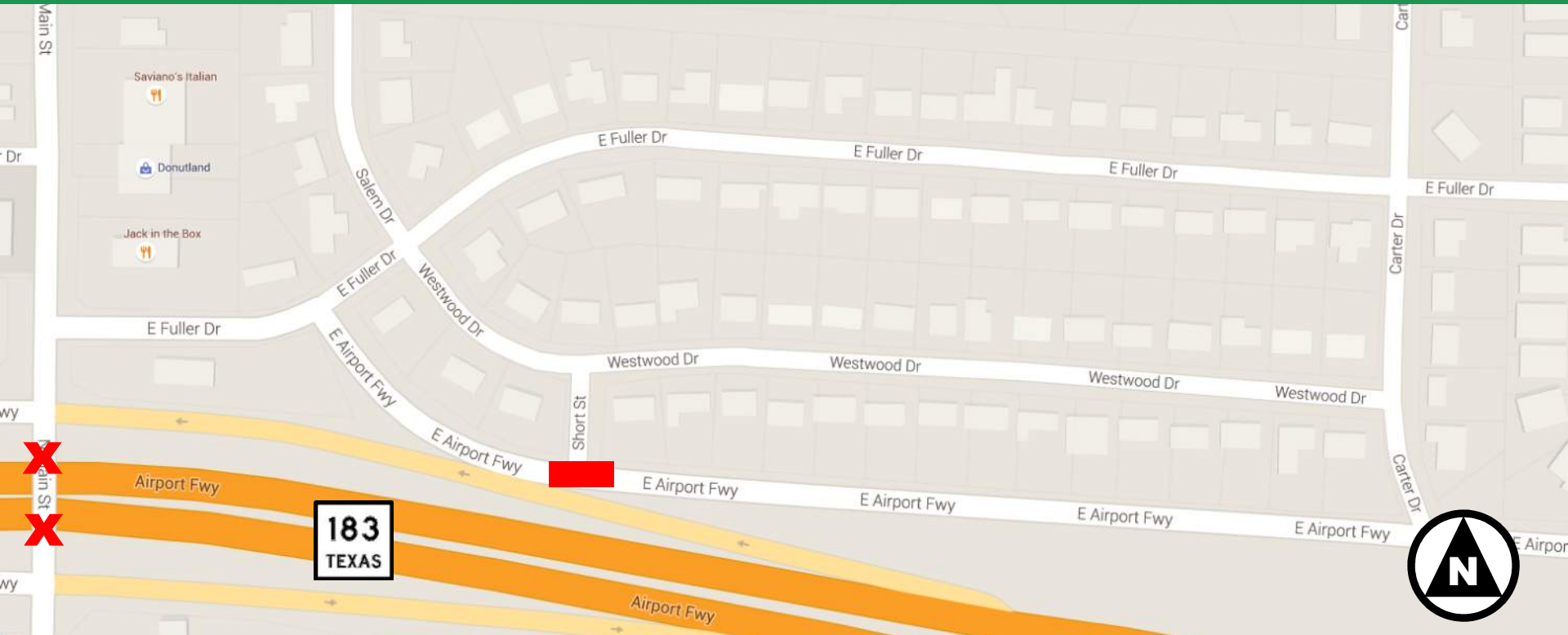
Detour Signage

1. The map shows a representation of the detour signage location along the route. It does not represent actual wording on the signage.
2. Additional detour signs, not shown, will also be placed farther south on Main St. and additional signs further west on Highway 10.

LONG-TERM CLOSURE OF MAIN ST. BRIDGE

Closures on the north side of the highway

Not to scale



X Main St. Bridge Closed

■ City Street Closures

Closures on the north side of SH 183

1. Access to Short Street from the westbound SH 183 frontage road will be eliminated when the Main St. Bridge is removed.



Questions?